

**LED**

# 455 METAL WRAP



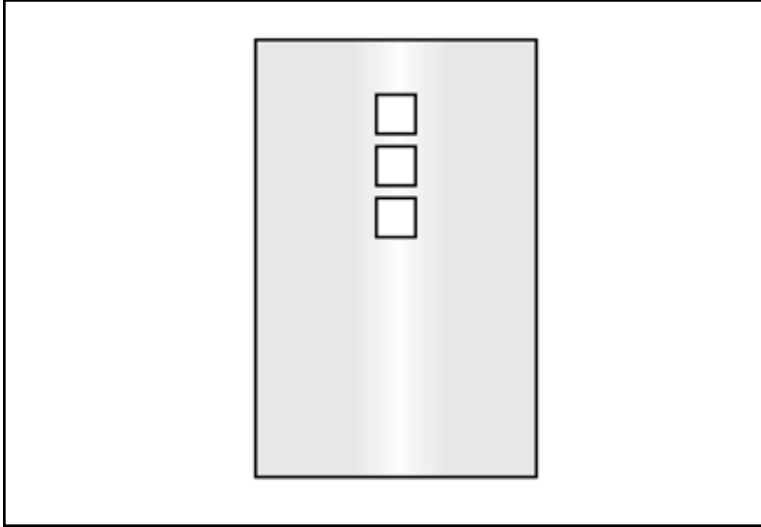
This clean, basic sconce provides a halo of light at an economical price. Solid metal construction and fastening methods ensure a rigid and sturdy fixture.

**Indessa**  
LIGHTING

# 455 METAL WRAP

TYPE

LED



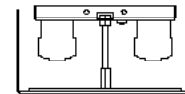
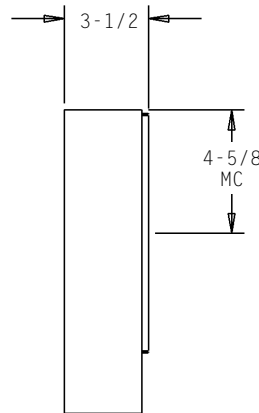
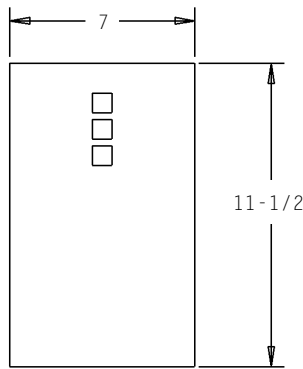
PROJECT: \_\_\_\_\_

LOCATION: \_\_\_\_\_

## FEATURES

- Economical sconce with rigid construction.
- Stylish windows with mechanically attached acrylic backing.
- Easy installation.
- Standard 0-10V dimming driver.
- All parts are treated with a five stage phosphate bonding process before being finished with a long lasting powder coat finish.
- Complies with ADA.
- No visible fasteners.
- Manufactured in the U.S.A.

## DIMENSIONS



MC = Mounting Center

A 4" octagonal junction box should be used for installation.

## ORDERING INFORMATION / OPTIONS EXAMPLE: 455-2CFQ13-BRZ

# 455

### MODEL

455 - Metal Wrap

### LAMP

- 1LED9** – (1) 9W LED Module, 1100 Lumens
- 1LED14** – (1) 14W LED Module, 1550 Lumens
- 1LED19** – (1) 19W LED Module, 2000 Lumens
- 1CFQ13** – (1) 13w QUAD TUBE CF (G24Q-1 Base)
- 1CFQ18** – (1) 18w QUAD TUBE CF (G24Q-2 Base)
- 1CFQ26** – (1) 26w QUAD TUBE CF (G24Q-3 Base)
- 2CFQ13** – (2) 13w QUAD TUBE CF (G24Q-1 Base)
- 2CFQ18** – (2) 18w QUAD TUBE CF (G24Q-2 Base)
- 2CFQ26** – (2) 26w QUAD TUBE CF (G24Q-3 Base)

Consult factory for other available lamps and LED Wattages.

### HOUSING FINISH

- WHT** - White
- BLK** - Black
- SAL** - Silver
- BRZ** - Bronze

Consult factory for other finishes.

### OPTIONS

- DL** - Damp Label
- TL** - Top Lens
- BL** - Bottom Lens
- Lamp** - Lamp provided, please specify color temperature
- 30K** - 3000 Kelvin Temperature
- 35K** - 3500 Kelvin Temperature
- 40K** - 4000 Kelvin Temperature