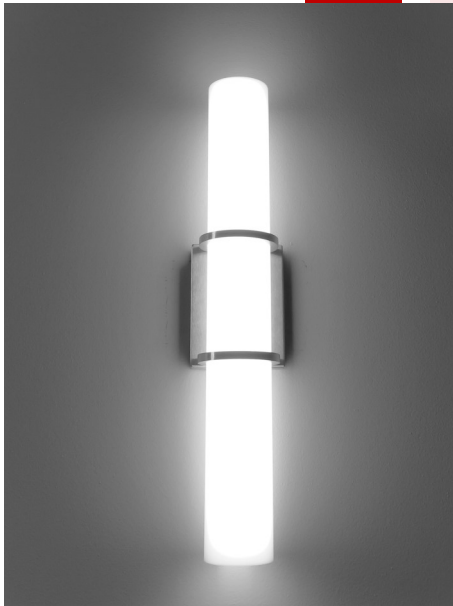


366 Magnum

Project: _____

Location: _____

Catalog Number	MODEL	LENGTH/WATTS	FINISH	OPTION(S)
Example: 366-13LED12-BRZ-30K	366	-	-	-



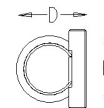
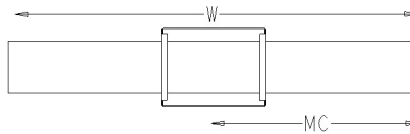
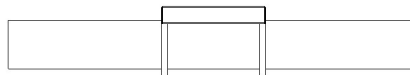
This versatile fixture can be mounted both vertically or horizontally to provide maximum flexibility in your design. With a variety of lumen packages available, this fixture can provide a soft subtle glow for accent lighting or a more intense light for

Features:

- Solid aluminum frame with decorative accents
- Brushed aluminum or powder coat finishes available
- Offered in a wide variety of lumen packages
- Textured, 1/8" extruded, opal acrylic lens
- Standard 0-10V dimming driver. 120-277V MVOLT
- Suitable for dry or damp locations
- Meets all ADA requirements
- Manufactured in the USA

Dimensions

Width	Height	Depth
4.5"	13"	4"
4.5"	24"	4"
4.5"	48"	4"



A 4" octagonal junction box should be used for installation

MC = Mounting Center, located at center of fixture unless noted otherwise

Ordering Information/Options

Model	Length	Watts	Finishes	Options					
366	13	LED10	1600 Lumens	MVOLT	WHT White	DL	Damp Label		
		LED12	2000 Lumens					BLK Black	30K 3000 Kelvin Temperature
		LED16	2800 Lumens					SAL Silver	35K 3500 Kelvin Temperature
24	24	LED10	1700 Lumens	MVOLT	BRZ Bronze	40K	4000 Kelvin Temperature		
		LED16	2800 Lumens					BA Brushed Aluminum	
		LED20	3300 Lumens						
48	48	LED10	1700 Lumens	MVOLT	WHT White	DL	Damp Label		
		LED14	2400 Lumens					BLK Black	30K 3000 Kelvin Temperature
		LED21	3600 Lumens					SAL Silver	35K 3500 Kelvin Temperature

Indessa
Lighting

PHONE: 509.924.0243

www.indessa.com

Indessa Lighting reserves the right to make design revisions without prior notice.

